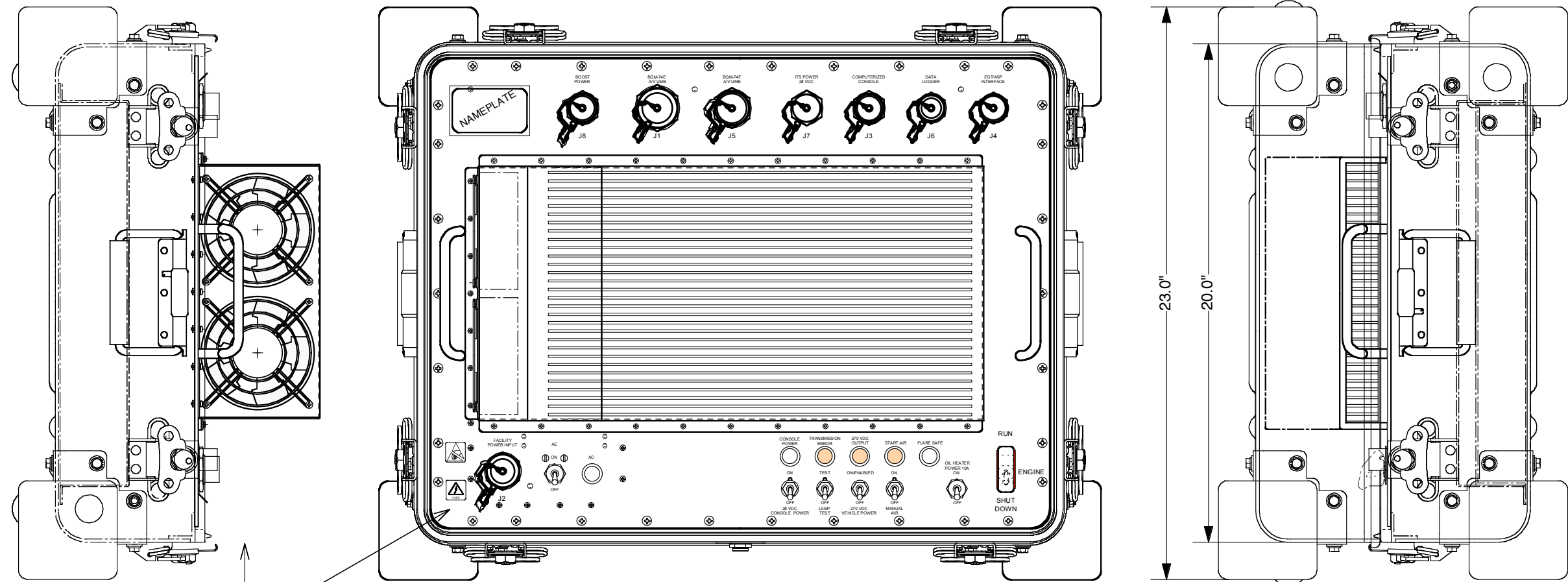


REVISIONS			
Rev.	DESCRIPTION	Date	Approv.
-	Release per ECO-329		
A	Revision per ECO-384		
B	Revision per ECO-443		
C	Revision per ECO - 488		



**" J1" BQM-74E A/V UMB**  
**MS3474L22-41S**

A	28 VDC BAT
B	FIRE DETECTION 28 VDC
C	UMBILICAL INTERLOCK-1
D	UMBILICAL INTERLOCK-2
E	FIRE WARNING
F	CHASSIS GND
G	DATA OUT
H	DATA IN
J	CLOCK
K	STROBE
L	SEND/REC
M	I/O RTN.
N	FIRE DETECT TEST-1
P	FIRE DETECT TEST-2
R	N/C
S	N/C
T	BAT TEST CMD
U	ENGINE SHUTDOWN
V	AIR/GND
W	CHASSIS GND.
X	A/V ESSENTIAL BUS 28 VDC
Y	AIR VEHICLE 270 VDC(-)
Z	CHASSIS GND (SAFETY)
a	DATA LOGGER OUT HI
b	LOGGER IN HI
c	UMBILICAL SENSE
d	N/C
e	DATA LOGGER OUT LO
f	FLARE SAFE
g	SPARE 1
h	N/C
i	LOGGER IN LO
j	BAT TEST (-)
k	AIR VEHICLE 270 VDC(+)
m	OIL HEATER 28 VDC
n	CHASSIS GND
p	N/C

**" J2" AC POWER**  
**D38999/24FE6PN**

A	120 VAC-1 (BLK)
B	120 VAC-2 (WHT)
C	SPARE
D	SPARE
E	SAFETY GROUND (GRN)
F	SPARE

**" J3" ITS**  
**D38999/24FD18SN**

A	PSSI In (+)
B	PSSI In (-)
C	SESI In (+)
D	SESI In (-)
E	SIGNAL GROUND
F	5V ICD INPUT
G	PSSI Out (+)
H	PSSI Out (-)
J	SESI Out (+)
K	SESI Out (-)
L	SIGNAL GROUND
M	SPARE
N	5V ICD INPUT RTN
P	ICD RESET
R	ICD PGD
S	ICD PGC
T	SPARE
U	SPARE

**" J5" BQM-74F A/V UMB**  
**D38999/24FF32SN**

A	SESI IN (+)
B	SESI IN (-)
C	SESI OUT (+)
D	SESI OUT (-)
T	DATA LOGGER OUT HI
U	DATA LOGGER OUT LO
R	ENGINE SHUTDOWN
S	UMBILICAL SENSE
f	A/V ESSENTIAL BUS 28 VDC
e	SIGNAL GND
p	FLARE SAFE
V	FIRE DETECTION 28 VDC
E	FIRE WARNING
W	FIRE DETECT TEST-1
X	FIRE DETECT TEST-2
F	N/C
G	N/C
H	N/C
a, b, c	AIR VEHICLE 270 VDC (-)
K, L, M	AIR VEHICLE 270 VDC (+)
j	CHASSIS GND. (SAFETY)
J	SPARE
Z	SPARE
h	SPARE
g	UMB INTERLOCK-1
y	UMB INTERLOCK-2
d	N/C
N	N/C

**" J4" EGT/ASP**  
**MS3474L14-15S**

A	N/C
B	N/C
C	N/C
D	+28 VDC
E	CURRENT LOOP RTN
F	CHASSIS
G	CHASSIS
H	AIR
J	IGNITER
K	N/C
L	N/C
M	N/C
N	N/C
P	N/C
R	AIR RTN

**" J6" DATA LOGGER**  
**D38999/24FC8SN**

A	RESERVED 1
B	RESERVED 2
C	DATA LOGGER OUT HI
E	DATA LOGGER OUT LO
F	DATA LOGGER IN HI
H	DATA LOGGER IN LO
D	SIGNAL GROUND
	SPARE

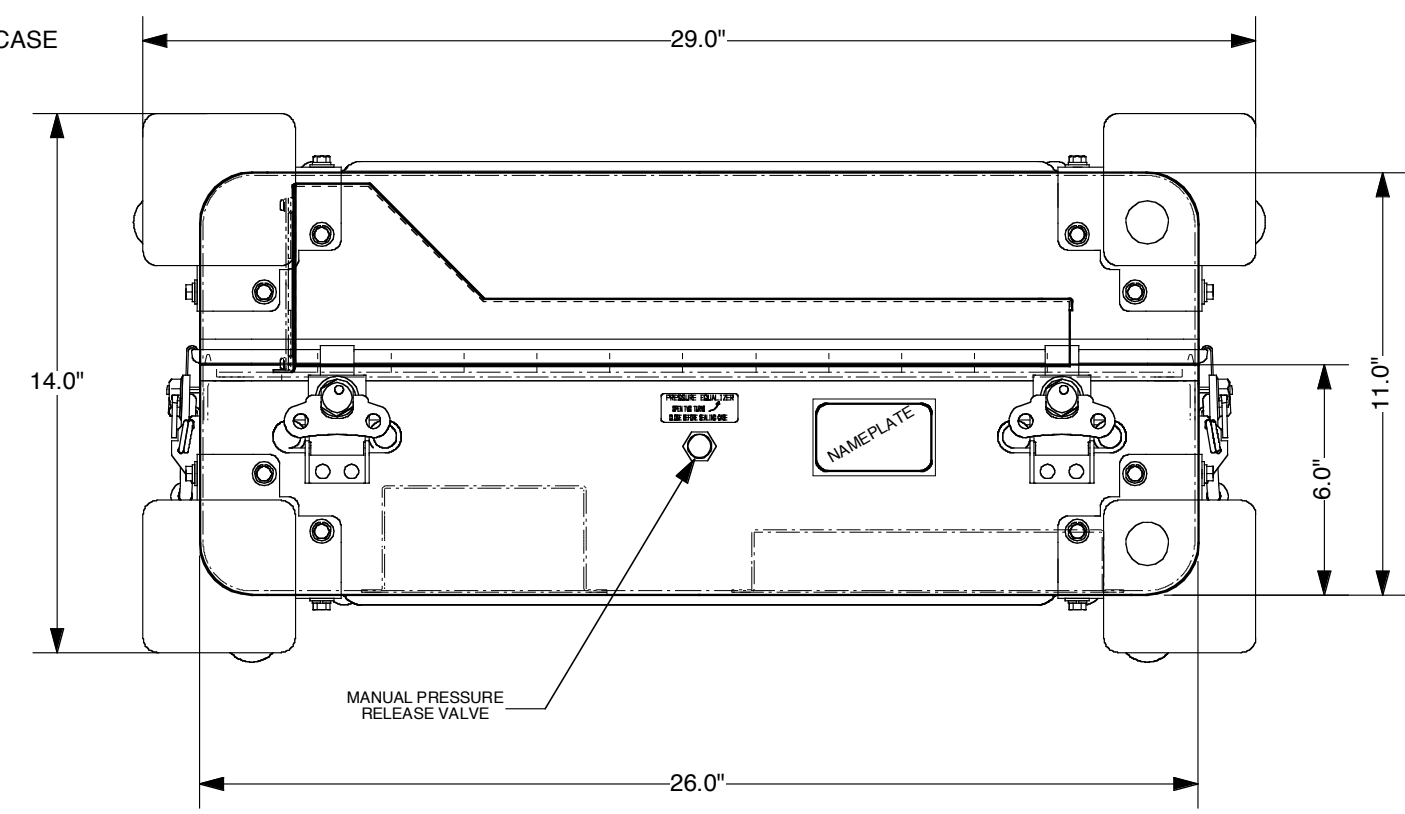
**" J7" ITS POWER 28VDC**  
**MS3474W14-4S**

A	ITS PWR 28VDC
B	ITS PWR 28VDC
C	ITS PWR 28VDC RTN
D	ITS PWR 28VDC RTN

**" J8" BOOST POWER**  
**D38999/24FD97S**

A	(-) CONTROL
B	SPARE
C	BOOST POWER (-)
D	SPARE
E	SPARE
F	SPARE
G	BOOST POWER (+)
H	SPARE
J	SPARE
K	(+) CONTROL
L	SPARE
M	CHASSIS GND SAFETY

TOP PROTECTIVE CASE REMOVED



WEIGHT ≤ 93 LBS.

*Viabie Power Conversion Technologies Inc.*

DRAWN: J. STEPIEN	DWG. NAME:				
DATE: 26.SEP.2006	<b>GROUND SUPPORT PSU &amp; PROTECTIVE CASE LAYOUT</b>				
CHKD:					
DATE:					
APPVD:					
DATE:					
SIZE: B	SCALE: 1:5	CAGE: 3AJ03	DWG. No.: VOI 05000-00	REV: C	SHEET: 1 of 1

This Drawing contains trade secrets and/or confidential information ("Proprietary Information") of Viabie Power Conversion Technologies ("VPCT") which, if disclosed, could cause financial loss to, or prejudice the competitive position of, VPCT. The Proprietary Information shall not be used for any purpose other than the evaluation of this proposal. Disclosure of or access to such Proprietary Information may not be made or given to third parties without VPCT's prior written consent.