


I/O PIN ASSIGNMENTS

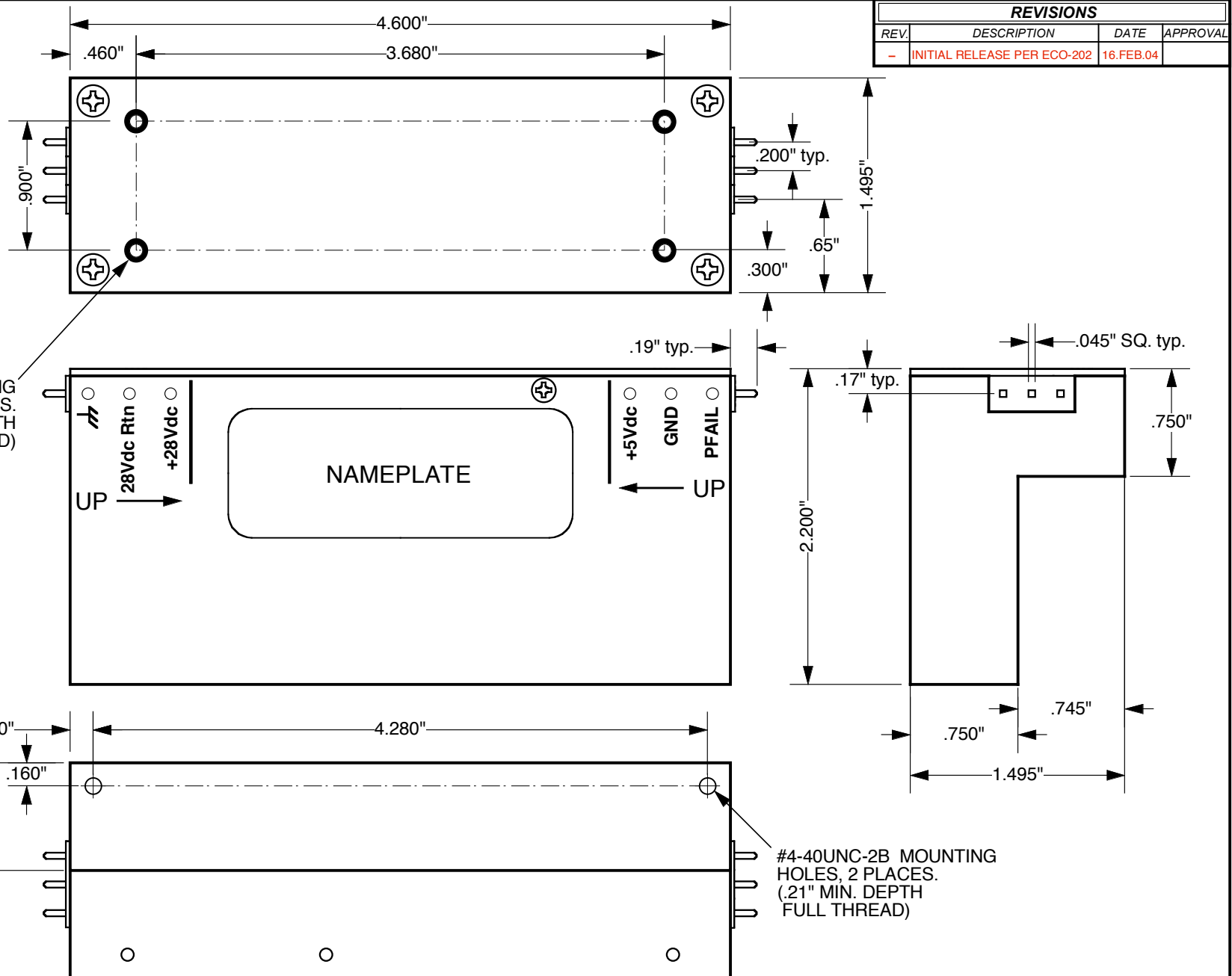
INPUT

 Chassis GND
 28Vdc Rtn +28Vdc Input Return
 +28Vdc +28Vdc Input

OUTPUT

PFAIL Power Fail Detection
 GND +5Vdc Output Return
 +5Vdc +5Vdc Output

REVISIONS			
REV.	DESCRIPTION	DATE	APPROVAL
-	INITIAL RELEASE PER ECO-202	16.FEB.04	



#4-40UNC-2B MOUNTING HOLES, 4 PLACES. (.21" MIN. DEPTH FULL THREAD)

#4-40UNC-2B MOUNTING HOLES, 2 PLACES. (.21" MIN. DEPTH FULL THREAD)

NOTE: WEIGHT ≤ 0.59 lbs.

<i>Viabile Power Conversion Technologies Inc.</i>					
DRAWN:	J. STEPIEN	DWG. NAME:	+28VDC / +5VDC @ 3A POWER SUPPLY		
DATE:	03.NOV.2003				
CHKD:	S.S.				
DATE:					
APPVD:	G.C.				
DATE:					
SIZE:	SCALE:	CAGE:	DWG. No.:	REV.:	SHEET:
A	1:1	3AJ03	VOI 03076-00	-	1 of 1

This Drawing contains trade secrets and/or confidential information ("Proprietary Information") of Viabile Power Conversion Technologies ("VPCT") which, if disclosed, could cause financial loss to, or prejudice the competitive position of, VPCT. The Proprietary Information shall not be used for any purpose other than the evaluation of this proposal. Disclosure of or access to such Proprietary Information may not be made or given to third parties without VPCT's prior written consent.