

**I/P PIN ASSIGNMENTS**

**J1 INPUT POWER**  
D38999/24 W B5 PA

J1 - A N/C  
J1 - B N/C  
J1 - C +28  
J1 - D +28 RET  
J1 - E SHLD

**J3 OUTPUT POWER (W1)**  
DBM225SNA197

J3-1 +5V  
J3-2 +5V  
J3-3 +12V  
J3-4 +12V  
J3-5 +28V(H)  
J3-6 +28V(H)  
J3-7 N/C  
J3-8 FAIL\*  
J3-9 N/C  
J3-10 RMS\_INTERLOCK\_T  
J3-11 N/C  
J3-12 LRU\_FAULT\_LED\_A  
J3-13 IP\_OK\_LED\_A  
  
J3-14 0V(5)  
J3-15 0V(5)  
J3-16 0V(12)  
J3-17 0V(12)  
J3-18 0V(28)(H)  
J3-19 0V(28)(H)  
J3-20 TEMP\_FAULT\*  
J3-21 N/C  
J3-22 RMS\_INTERLOCK\_C  
J3-23 N/C  
J3-24 LRU\_FAULT\_LED\_C  
J3-25 IP\_OK\_LED\_C

**J4 OUTPUT POWER (W2)**  
DBM225SNA197

J4-1 +5V  
J4-2 +5V  
J4-3 +12V  
J4-4 +12V  
J4-5 +28V(H)  
J4-6 +28V(H)  
J4-7 N/C  
J4-8 FAIL\*  
J4-9 N/C  
J4-10 RMS\_INTERLOCK\_T  
J4-11 N/C  
J4-12 BIT\_STATUS\_T  
J4-13 BIT\_STATUS\_S  
  
J4-14 0V(5)  
J4-15 0V(5)  
J4-16 0V(12)  
J4-17 0V(12)  
J4-18 0V(28)(H)  
J4-19 0V(28)(H)  
J4-20 TEMP\_FAULT\*  
J4-21 N/C  
J4-22 RMS\_INTERLOCK\_C  
J4-23 N/C  
J4-24 BIT\_STATUS\_C  
J4-25 DHDD\_OV\_REF

**O/P PIN ASSIGNMENTS**

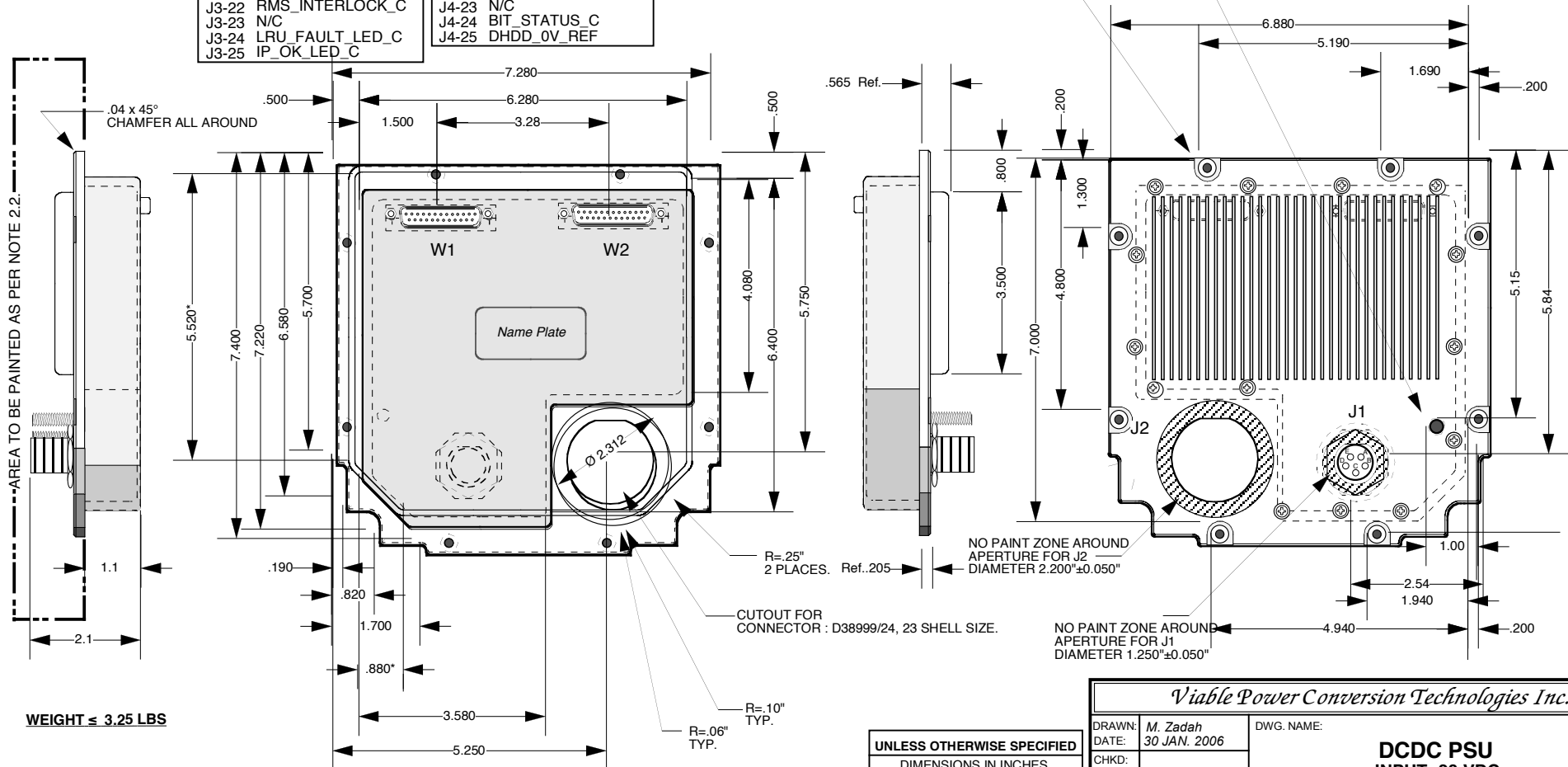
**NOTES:**

- \* DENOTES DIMENSION TO THEORETICAL SHARP CORNER.
- FINISH:**
  - THE POWER SUPPLY ALUMINUM PARTS SHALL BE SURFACE TREATED IN ACCORDANCE WITH MIL-C-5541, CLASS 3, CHEMICAL CONVERSION COATING.
  - THE POWER SUPPLY EXTERNAL SURFACES SHALL BE PRIMED AND PAINTED IN ACCORDANCE WITH MANUFACTURER'S SPECIFICATION, USING PRIMER MIL-PRF-23377, TYPE 1 AND PAINT MIL-PRF-22750, TYPE 1, COLOR LUSTERLESS GREY NUMBER 36231 OF FED-STD-595, EXCEPT THE AREA MARKED AS NO PAINT ZONE.

REVISIONS			
REV.	DESCRIPTION	DATE	APPROVED
-	AS PER ECO.# VPCT-453		

∅.50  
∅.04  
SLOT TO OUTSIDE  
∅.344 X 100°  
.164-32 UNC-2B THRU  
8 PLCS.  
FOR SCREWS P/N 114221-.625-SS-12  
(ACCURATE SCREW MACHINE CO.)

GND STUD  
.250-20 UNC-2B  
PLUS NUT, WASHER  
& LOCK WASHER.



**WEIGHT ≤ 3.25 LBS**

This Drawing contains trade secrets and/or confidential information ("Proprietary Information") of Viable Power Conversion Technologies ("VPCT") which, if disclosed, could cause financial loss to, or prejudice the competitive position of, VPCT. The Proprietary Information shall not be used for any purpose other than the evaluation of this proposal. Disclosure of or access to such Proprietary Information may not be made or given to third parties without VPCT's prior written consent.

<b>UNLESS OTHERWISE SPECIFIED</b>	
DIMENSIONS IN INCHES.	
TOLERANCES ON:	
Hole Diam ± .003	Angles ± 2°
Decimals .XXX ± .005	
.XX ± .02	

<i>Viable Power Conversion Technologies Inc.</i>					
DRAWN: M. Zadah	DWG. NAME:	<b>DCDC PSU</b> <b>INPUT: 28 VDC.</b> <b>OUTPUT: 5VDC/5A, 12VDC/6A, 28VDC/3A</b>			
DATE: 30 JAN. 2006					
CHKD:					
DATE:		CAGE: 3AJ03	DWG. No.: VOI 03010-01	REV.: -	SHEET: 1 of 1
APPVD:		SCALE: 1:3			
DATE:					
SIZE: A					