

I/O PIN ASSIGNMENTS

**AC INPUT (J1):
DEMC 9PJ K87**

J1 - 1	115Vac -ΦA
J1 - 2	115Vac -ΦB
J1 - 3	115Vac -ΦC
J1 - 4	n/c
J1 - 5	Chassis
J1 - 6	115Vac -ΦA
J1 - 7	115Vac -ΦB
J1 - 8	115Vac -ΦC
J1 - 9	Chassis

**AC OUTPUT (J4):
DEMC 9SJA197**

J4 - 1	115Vac -ΦA
J4 - 2	115Vac -ΦB
J4 - 3	115Vac -ΦC
J4 - 4	n/c
J4 - 5	Chassis
J4 - 6	115Vac -ΦA
J4 - 7	115Vac -ΦB
J4 - 8	115Vac -ΦC
J4 - 9	Chassis

**DC OUT (J2):
DDMC 24H7SJA197**

J2 - A1	VME_-12 RTN
J2 - A2	VME_-12
J2 - A3	N/C
J2 - A4	VME_+12 RTN
J2 - A5	VME_+12
J2 - A6	PERIPH_+28
J2 - A7	PERIPH_+28 RTN
J2 - 1	COOL_+24
J2 - 2	FAN_RTN.
J2 - 3	STIR_+24
J2 - 4	TEMPSENS2 RTN
J2 - 5	TEMPSENS2
J2 - 6	TEMPSENS3
J2 - 7	TEMPSENS3 RTN
J2 - 8	TEMPSENS1 RTN
J2 - 9	TEMPSENS1
J2 - 10	VME_+3.3 RTN
J2 - 11	VME_+3.3 RTN
J2 - 12	VME_+3.3 RTN
J2 - 13	VME_+3.3 SENSE
J2 - 14	VME_+3.3 SENSE RTN
J2 - 15	VME_+3.3
J2 - 16	VME_+3.3
J2 - 17	VME_+3.3

**DC OUT (J5):
DBMC25SJA197**

J5 - 1	+5VSENSE
J5 - 2	+3.3VSENSE
J5 - 3	SWITCH1
J5 - 4	SWITCH2
J5 - 5	SWITCH2 RTN.
J5 - 6	ANODE_ACOK
J5 - 7	ANODE_HTRS
J5 - 8	ANODE_DCOK
J5 - 9	ANODE_OTLED
J5 - 10	SYSRESET1*
J5 - 11	FANPWR_OK*
J5 - 12	DCOK*
J5 - 13	LOGIC_GND
J5 - 14	+5VSENSE RTN.
J5 - 15	+3.3VSENSE RTN.
J5 - 16	SWITCH1 RTN.
J5 - 17	N/C
J5 - 18	N/C
J5 - 19	CATHODE_ACOK
J5 - 20	CATHODE_HTRS
J5 - 21	CATHODE_DCOK
J5 - 22	CATHODE_OTLED
J5 - 23	SYSRESET2*
J5 - 24	ACFAIL*
J5 - 25	OVERTEMP*

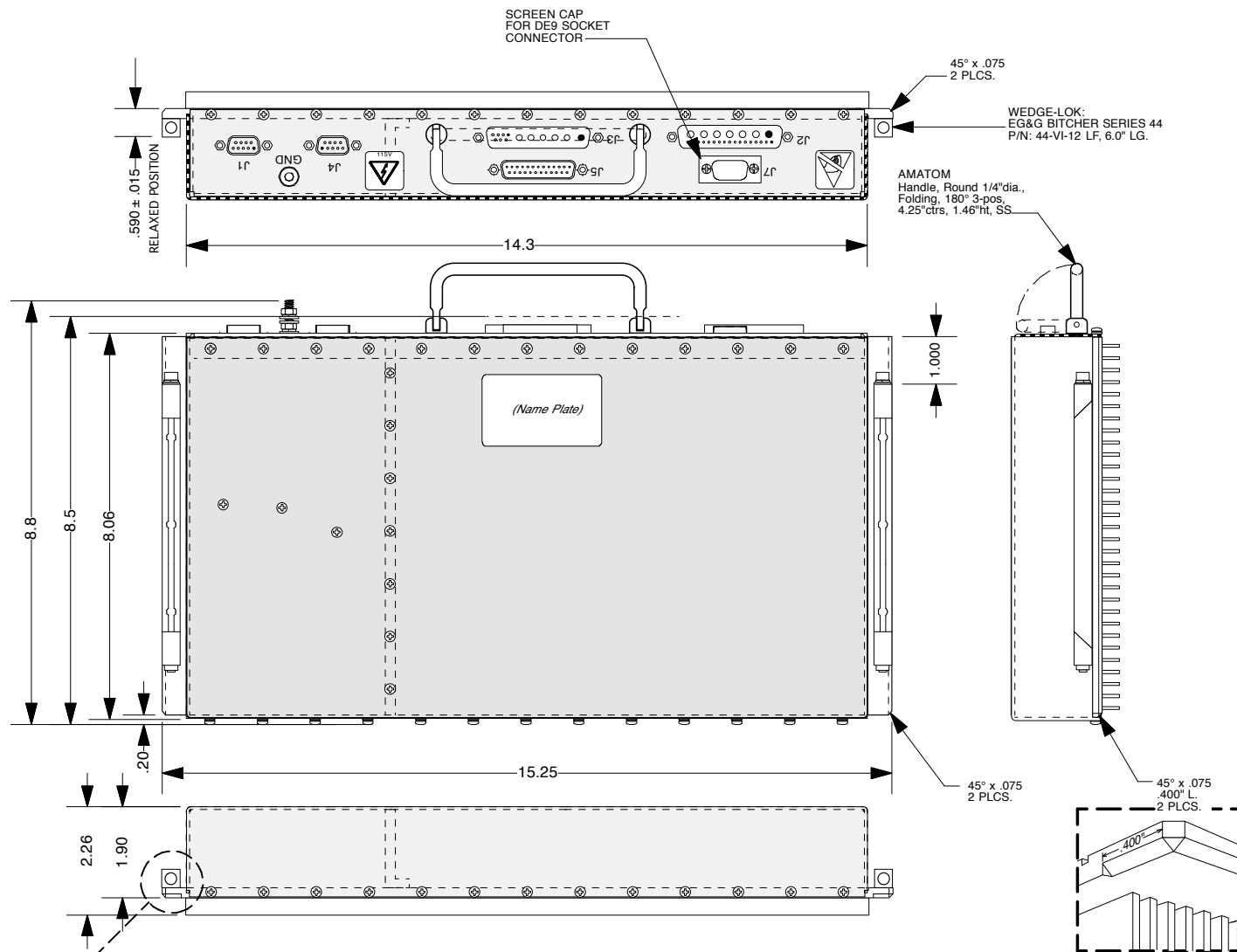
**J3 OUTPUT POWER
DCMC13H6SJA197**

J3 - A1	VME+5
J3 - A2	VME+5 RTN.
J3 - A3	VME+5
J3 - A4	VME+5 RTN.
J3 - A5	VME+5
J3 - A6	VME+5 RTN.
J3 - 1	+5VSENSE
J3 - 2	N/C
J3 - 3	PERIPH_+28
J3 - 4	PERIPH_+28
J3 - 5	+5VSENSE RTN.
J3 - 6	PERIPH_+28 RTN
J3 - 7	PERIPH_+28 RTN

**J7 TRIM
DEMC 9SJA197**

J7 - 1	TRIM+12
J7 - 2	TRIM-12
J7 - 3	TRIM-3.3
J7 - 4	TRIM+5
J7 - 5	TRIM+24 FAN
J7 - 6	TRIM+28 PERPH
J7 - 7	N/C
J7 - 8	N/C
J7 - 9	N/C

REVISIONS			
REV.	DESCRIPTION	DATE	APPROVED
A	AS PER ECO# VPCT-186		
C	AS PER ECO# VPCT-190		



WEIGHT ≤ 12 LBS.

This Drawing contains trade secrets and/or confidential information ("Proprietary Information") of Viable Power Conversion Technologies ("VPCT") which, if disclosed, could cause financial loss to, or prejudice the competitive position of, VPCT. The Proprietary Information shall not be used for any purpose other than the evaluation of this proposal. Disclosure of or access to such Proprietary Information may not be made or given to third parties without VPCT's prior written consent.

UNLESS OTHERWISE SPECIFIED
DIMENSIONS IN INCHES.
TOLERANCES ON:
Hole Diam ± .003 Angles ± 2°
Decimals .XXX ± .005
.XX ± .01

<i>Viable Power Conversion Technologies Inc.</i>			
DRAWN: M. Zadah	DWG. NAME: MCV/ASP PSU		
DATE: 31 JUL. 2003	INPUT: 115 VAC, 400Hz., 3 PHASES.		
CHKD:	OUTPUT: +3.3VDC/10A, +5VDC/80A, +12VDC/4A,		
DATE:	-12VDC/3A, +24VDC/3A, +28VDC/17A		
APPVD:	(MAX. POWER OUTPUT=400W)		
DATE:			
SIZE: A	SCALE: 1:3.5	CAGE: 3AJ03	DWG. No.: VOI 03004-00
			REV.: C
			SHEET: 1 of 1