

I/O PIN ASSIGNMENTS

AC INPUT (J1): DE9P

J1 - 1	115VAC - ØA
J1 - 2	115VAC - ØB
J1 - 3	115VAC - ØC
J1 - 4	n/c
J1 - 5	GROUND (Chassis)
J1 - 6	115VAC - ØA
J1 - 7	115VAC - ØB
J1 - 8	115VAC - ØC
J1 - 9	GROUND (Chassis)

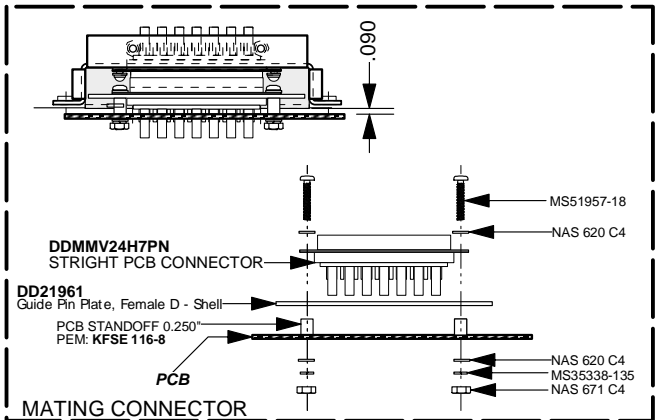
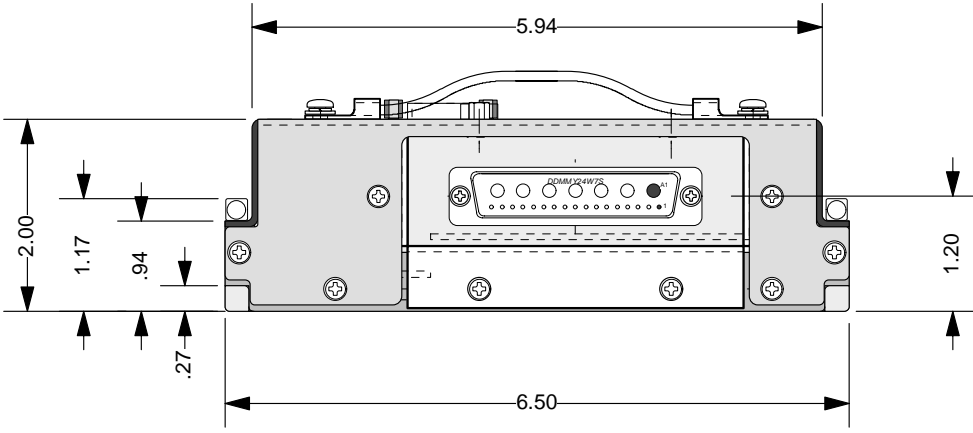
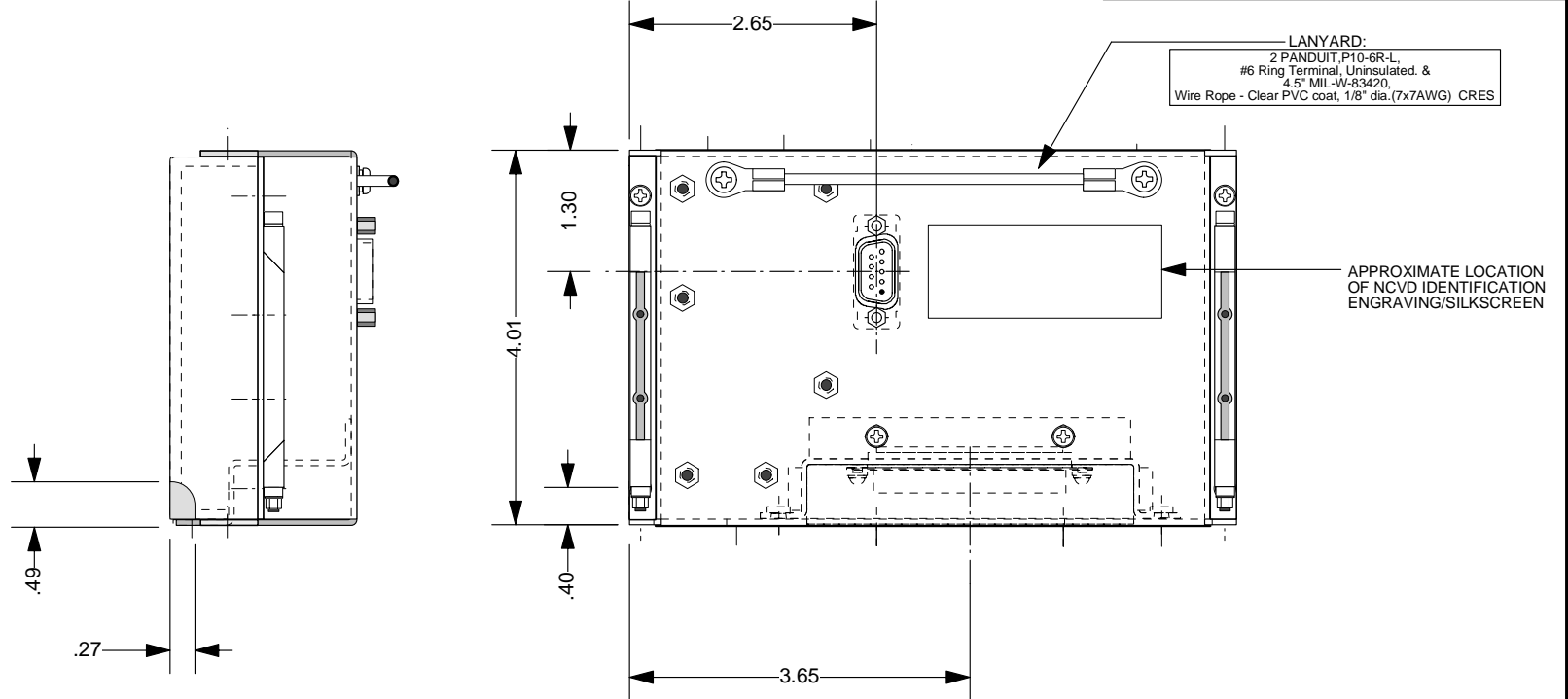
**DC OUT (J2): DDMY 24W7S
(Dual Float Mount Connector)***

J2 - A1	+ 5VDC
J2 - A2	+ 5VDC Rtn
J2 - A3	+ 5VDC
J2 - A4	+ 5VDC Rtn
J2 - A5	N/C
J2 - A6	+ 12VDC
J2 - A7	+12 VDC Rtn
J2-1	AC OK
J2-2	+5V SENSE
J2-3	+5V SENSE RTN.
J2-4	DC OK
J2-5	N/C
J2-6	N/C
J2-7	LOGIC GND
J2-8	N/C
J2-9	N/C
J2-10	N/C
J2-11	TRIM +5VDC
J2-12	N/C
J2-13	N/C
J2-14	TRIM +12VDC
J2-15	N/C
J2-16	N/C
J2-17	N/C

*.031" Total Diametrical Float (for misalignment)

WEIGHT ≤ 2.5 LBS.

REVISIONS			
REV.	DESCRIPTION	DATE	APPROVED



This Drawing contains trade secrets and/or confidential information ("Proprietary Information") of Viable Power Conversion Technologies ("VPCT") which, if disclosed, could cause financial loss to, or prejudice the competitive position of, VPCT. The Proprietary Information shall not be used for any purpose other than the evaluation of this proposal. Disclosure of or access to such Proprietary Information may not be made or given to third parties without VPCT's prior written consent.

<i>Viable Power Conversion Technologies Inc.</i>					
DRAWN: M. Zadah	DWG. NAME: P3 - AC/DC PSU		INPUT: 115VAC L-N 400 Hz, 3Ø		
DATE: 26 JUN 2003	DATE:		OUTPUT: +5VDC@30A, 12VDC@4A		
CHKD:	DATE:		POWER: 200 Watts.		
APPVD:	DATE:				
SIZE: A	SCALE: 1:2	CAGE: 3AJ03	DWG. No.: VOI 03003-01	REV.: -	SHEET: 1 of 1