

REVISIONS

REV.	DESCRIPTION	DATE	APPROVED
A	AS PER E.C.O. # VPCT-223	20 JAN. 04	

INPUT PIN ASSIGNMENTS

J1: MS 3114 P 12-3 P

- J1 - A 270V HI (DCI n1)
- J1 - B 270V LO (DCI n1)
- J1 - C Chassis GND

J1 mates with MS3116 P 12-3 S

J2: MS 3114 P 12-3 P

- J2 - A 270V HI (DCI n2)
- J2 - B 270V LO (DCI n2)
- J2 - C Chassis GND

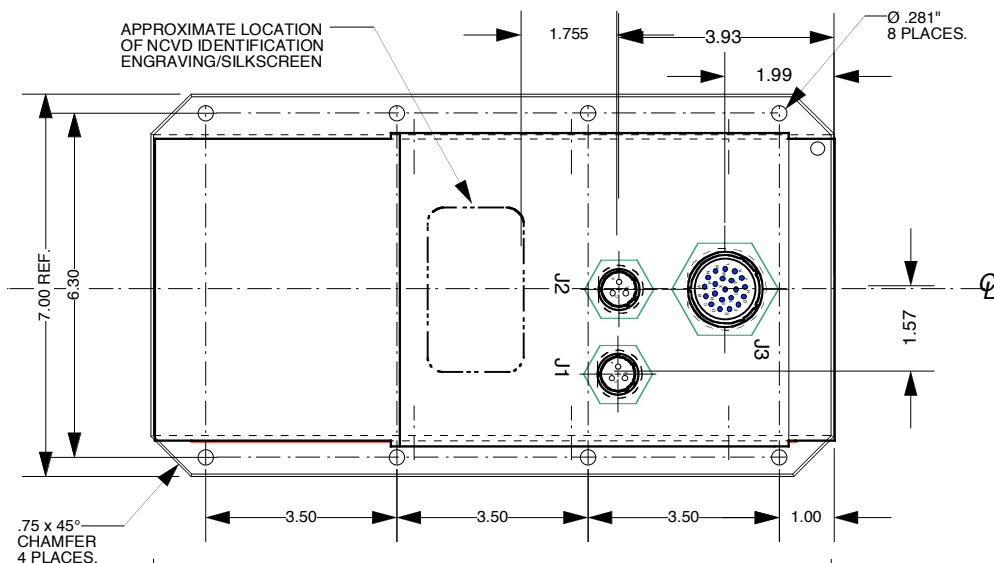
J2 mates with MS3116 P 12-3 S

OUTPUT PIN ASSIGNMENTS

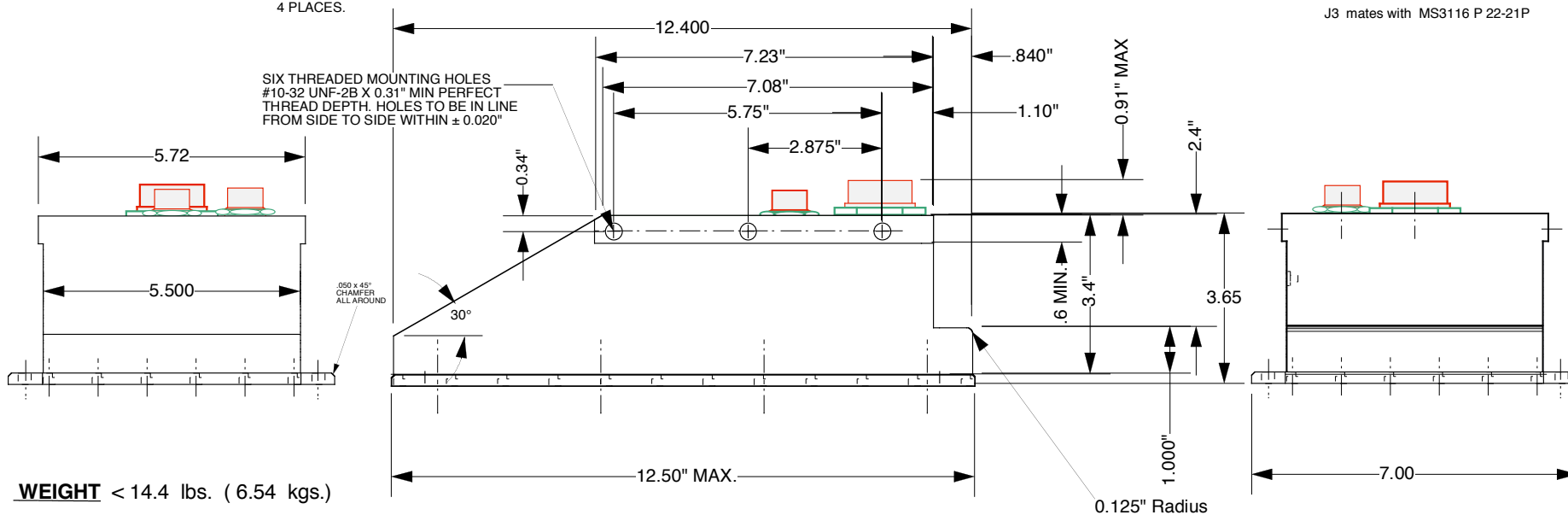
J3: MS 3114 P 22-21 S

- J3 - A 28VDC
- J3 - B 28VDC
- J3 - C 28VDC
- J3 - D 28VDC
- J3 - E 28VDC
- J3 - F N/C
- J3 - G N/C
- J3 - H Pwr RTN
- J3 - J Pwr RTN
- J3 - K Pwr RTN
- J3 - L Pwr RTN
- J3 - M Pwr RTN
- J3 - N N/C
- J3 - P N/C
- J3 - R 28VDC
- J3 - S 28VDC
- J3 - T N/C
- J3 - U Pwr RTN
- J3 - V Pwr RTN
- J3 - W N/C
- J3 - X Chassis GND

J3 mates with MS3116 P 22-21P



SIX THREADED MOUNTING HOLES
#10-32 UNF-2B X 0.31" MIN PERFECT
THREAD DEPTH. HOLES TO BE IN LINE
FROM SIDE TO SIDE WITHIN ± 0.020"



WEIGHT < 14.4 lbs. (6.54 kgs.)

This Drawing contains trade secrets and/or confidential information ("Proprietary Information") of Viable Power Conversion Technologies ("VPCT") which, if disclosed, could cause financial loss to, or prejudice the competitive position of, VPCT. The Proprietary Information shall not be used for any purpose other than the evaluation of this proposal. Disclosure of or access to such Proprietary Information may not be made or given to third parties without VPCT's prior written consent.

UNLESS OTHERWISE SPECIFIED
DIMENSIONS IN INCHES.
TOLERANCES ON:
Hole Diam ± .003 Angles ± 2°
Decimals .XXX ± .005
.XX ± .02

Viable Power Conversion Technologies Inc.

DRAWN: M. Zadah	DWG. NAME:
DATE: 15 DEC. 2003	2 KW - DCDC PSU LAYOUT
CHKD:	
DATE:	
APPVD:	CAGE: 3AJ03
DATE:	DWG. No.: VOI 03116-00
SIZE: A	SCALE: 1:3.5
	REV.: A
	SHEET: 1 of 1